

ULTRASONIC PLATE TRANSDUCERS

Technology of
SWITZERLAND

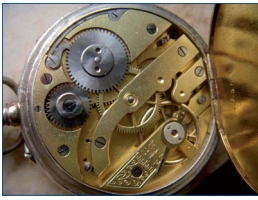


- › Ultrasonic cleaning technology
- › Spray cleaning technology
- › Process technology
- › Cleaning chemicals
- › Accessories
- › Special solutions



ULTRASONIC PLATE TRANSDUCERS

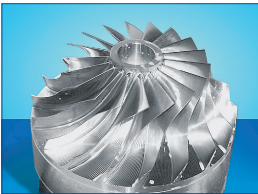
The plate transducers are the ideal solution when equipping cleaning tanks for the first time or retrofitting existing tanks in areas where space is a premium. They are fitted to the outside of tanks with welded or press-on mounting frames, thus saving space.



Watch manufacturing



Optician industries



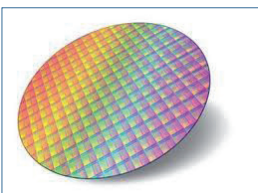
mechanic industries



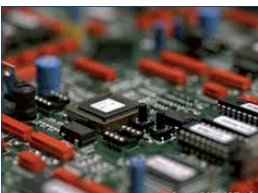
Micro sector



Precision mechanics industries



Chip wafer industries



Electronic industries

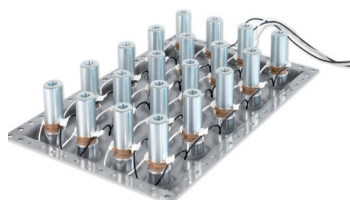
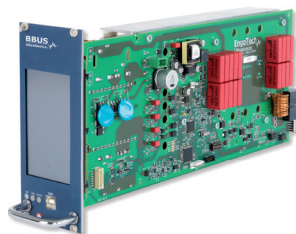
The plate transducers are therefore ideal both for new installations and retrofitting tanks where space is required. With numerous standard and customisable frequencies, configurable from 30 kHz to 250 kHz, the transducers allow an extremely broad spectrum of applications, such as water-based cleaning, degreasing, electroplating, electronics, PCB technology, optics and maintenance.

For applications that are particularly sensitive to soiling, such as medical equipment, the transducers are optionally available with angled diaphragms.

The sound generated is directed extremely accurately into the liquid by the diaphragm. The high-grade transducer elements using piezo technology ensure maximum ultrasonic efficiency and thereby shorter treatment times.

Advantages

- ▶ Long service life through use of a special steel alloy
- ▶ Excellent sonic field due to optimized piezo transducers
- ▶ Space-saving design due to fitting on outside of tanks using welded/press-on connections
- ▶ Can be supplied in different dimensions based on repeat of 30 mm



Technical Data TSKE-30	Dimensions in mm
30 kHz / 1000 Watt	300x350x50
30 kHz / 1000 Watt	300x450x50
30 kHz / 1000 Watt	300x500x50
30 kHz / 1000 Watt	350x250x50
30 kHz / 1000 Watt	350x350x50
30 kHz / 1000 Watt	350x450x50
30 kHz / 1000 Watt	400x250x50
30 kHz / 1000 Watt	400x350x50
30 kHz / 1000 Watt	400x450x50
30 kHz / 1000 Watt	450x250x50
30 kHz / 1000 Watt	450x350x50
30 kHz / 1000 Watt	450x450x50
30 kHz / 1000 Watt	500x250x50
30 kHz / 1000 Watt	500x350x50
30 kHz / 1000 Watt	500x450x50
30 kHz / 1000 Watt	500x500x50

Technical Data TSKE-120	Dimensions in mm
120 kHz / 1000 Watt	300x350x50
120 kHz / 1000 Watt	300x450x50
120 kHz / 1000 Watt	300x500x50
120 kHz / 1000 Watt	350x250x50
120 kHz / 1000 Watt	350x350x50
120 kHz / 1000 Watt	350x450x50
120 kHz / 1000 Watt	400x250x50
120 kHz / 1000 Watt	400x350x50
120 kHz / 1000 Watt	400x450x50
120 kHz / 1000 Watt	450x250x50
120 kHz / 1000 Watt	450x350x50
120 kHz / 1000 Watt	450x450x50
120 kHz / 1000 Watt	500x250x50
120 kHz / 1000 Watt	500x350x50
120 kHz / 1000 Watt	500x450x50
120 kHz / 1000 Watt	500x500x50

Technical Data TSKE-250	Dimensions in mm
250 kHz / 1000 Watt	300x350x50
250 kHz / 1000 Watt	300x450x50
250 kHz / 1000 Watt	300x500x50
250 kHz / 1000 Watt	350x250x50
250 kHz / 1000 Watt	350x350x50
250 kHz / 1000 Watt	350x450x50
250 kHz / 1000 Watt	400x250x50
250 kHz / 1000 Watt	400x350x50
250 kHz / 1000 Watt	400x450x50
250 kHz / 1000 Watt	450x250x50
250 kHz / 1000 Watt	450x350x50
250 kHz / 1000 Watt	450x450x50
250 kHz / 1000 Watt	500x250x50
250 kHz / 1000 Watt	500x350x50
250 kHz / 1000 Watt	500x450x50
250 kHz / 1000 Watt	500x500x50

Shipping list:
- weld mounting frame, seal.
- press-on mounting frame, set of screws in shipping list

Material:
Standard material: 1.4462/2 mm
Different materials and thicknesses are available on request.